

SURGE PROTECTIVE DEVICE SCHEDULE

| DESIGNATION | MODEL NUMBER | VOLTAGE | SURGE RATING | MODES OF PROTECTION | AUDIBLE ALARM | TRANSIENT CONSUMER | ENCLOSURE | INTEGRAL DISCONNECT | CIRCUIT BREAKER | FEEDER |
|-------------|------------------------------------|------------------|-------------------------------|-------------------------|---------------|--------------------|-----------|---------------------|-----------------|----------------|
| SPD "A" | CURRENT TECH. #CGP150277/4803GY | 277/480V, 3Ø, 4W | 300KA / PHASE 150KA / MODE | L-N, L-G, N-G, & L-L | YES | YES | NEMA 1 | NO | 100A-3P | 5#4 IN 1 1/4"C |
| SPD "B" | CURRENT TECH. #CGP080277/4803GY | 277/480V, 3Ø, 4W | 160KA / PHASE 80KA / MODE | L-N, L-G, N-G, & L-L | YES | YES | NEMA 1 | NO | 60A-3P | 5#6 IN 1"C |
| SPD "C" | CURRENT TECH. #CGP080120/2083GY | 277/480V, 3Ø, 4W | 160KA / PHASE 80KA / MODE | L-N, L-G, N-G, & L-L | YES | YES | NEMA 1 | NO | 60A-3P | 5#6 IN 1"C |

NOTE: ROUTE CONDUCTORS AS SHORT AND STRAIGHT AS POSSIBLE BETWEEN SURGE PROTECTION DEVICE (SPD) AND CIRCUIT BREAKER

AUTOMATIC TRANSFER SWITCH SCHEDULE

| DESIGNATION | SIZE (AMPS) | VOLTAGE (V) | POLES | EXERCISER | ENCLOSURE |
|-------------|-------------|------------------|-------|-----------|-----------|
| TSX | 150 | 277/480V, 3Ø, 4W | 3 | YES | NEMA 1 |

DRY-TYPE TRANSFORMER SCHEDULE

| DESIGNATION | SIZE (KVA) | PHASE | PRIMARY (V) | SECONDARY (V) | REMARKS |
|-------------|------------|-------|-------------|---------------|--|
| T1A | 45 | 3 | 480 | 120/208 | |
| T1B | 45 | 3 | 480 | 120/208 | |
| T1C | 45 | 3 | 480 | 120/208 | |
| T2A | 45 | 3 | 480 | 120/208 | |
| T2B | 45 | 3 | 480 | 120/208 | |
| T2C | 45 | 3 | 480 | 120/208 | |
| T3A | 45 | 3 | 480 | 120/208 | |
| T3B | 45 | 3 | 480 | 120/208 | |
| T3C | 45 | 3 | 480 | 120/208 | |
| T4A | 45 | 3 | 480 | 120/208 | |
| TK | 45 | 3 | 480 | 120/208 | |
| TX1A | 75 | 3 | 480 | 120/208 | PROVIDE 4" THICK CONCRETE "HOUSE KEEPING PAD" BELOW EACH FLOOR MOUNTED DRY TYPE TRANSFORMER AND SWITCHBOARD. |

RISER DIAGRAM FEEDER SCHEDULE

| | |
|-----|-----------------------------------|
| F1 | 3#8 & 1#10 GRND IN 3/4"C |
| F2 | 3#4 & 1#6 GRND IN 1 1/4"C |
| F3 | 4#8 & 1#10 GRND IN 1"C |
| F4 | 4#6 & 1#10 GRND IN 1"C |
| F5 | 4#4 & 1#8 GRND IN 1 1/4"C |
| F6 | 4#3 & 1#6 GRND IN 1 1/4"C |
| F7 | 4#1 & 1#6 GRND IN 2"C |
| F8 | 4#1 & 1#3 GRND IN 2"C (FIRE PUMP) |
| F9 | 4#1/0 & 1#6 GRND IN 2"C |
| F10 | 4#4/0 & 1#4 GRND IN 2 1/2"C |
| F11 | 4-500MCM & 1#3 GRND IN 3"C |
| F12 | 24-400 MCM IN 6-3"C |
| F13 | 3-#1 & 1#6 GRND IN 1-1/2"C |
| F14 | 4-250MCM & 1#4 GRND IN 2"C |

RISER DIAGRAM GROUNDING SCHEDULE

| | |
|----|---|
| G1 | 1#8 IN 1/2"C |
| G2 | 1#6 IN 1/2"C |
| G3 | 1#3/0 IN 3/4"C |
| G4 | PROVIDE #2/0 BARE COPPER GROUND GRID 1 FT. BEYOND TRANSFORMER PAD AND 2 FT. BELOW GRADE. CAD WELD GROUND ROD TO GROUND GRID AT ALL 4 CORNERS. |
| G5 | PROVIDE #2/0 BARE COPPER FROM GROUND GRID TO PRIMARY COMPARTMENT AND TO SECONDARY COMPARTMENT OF TRANSFORMER. |
| G6 | 1#2 IN 1/2"C |

KEYNOTES

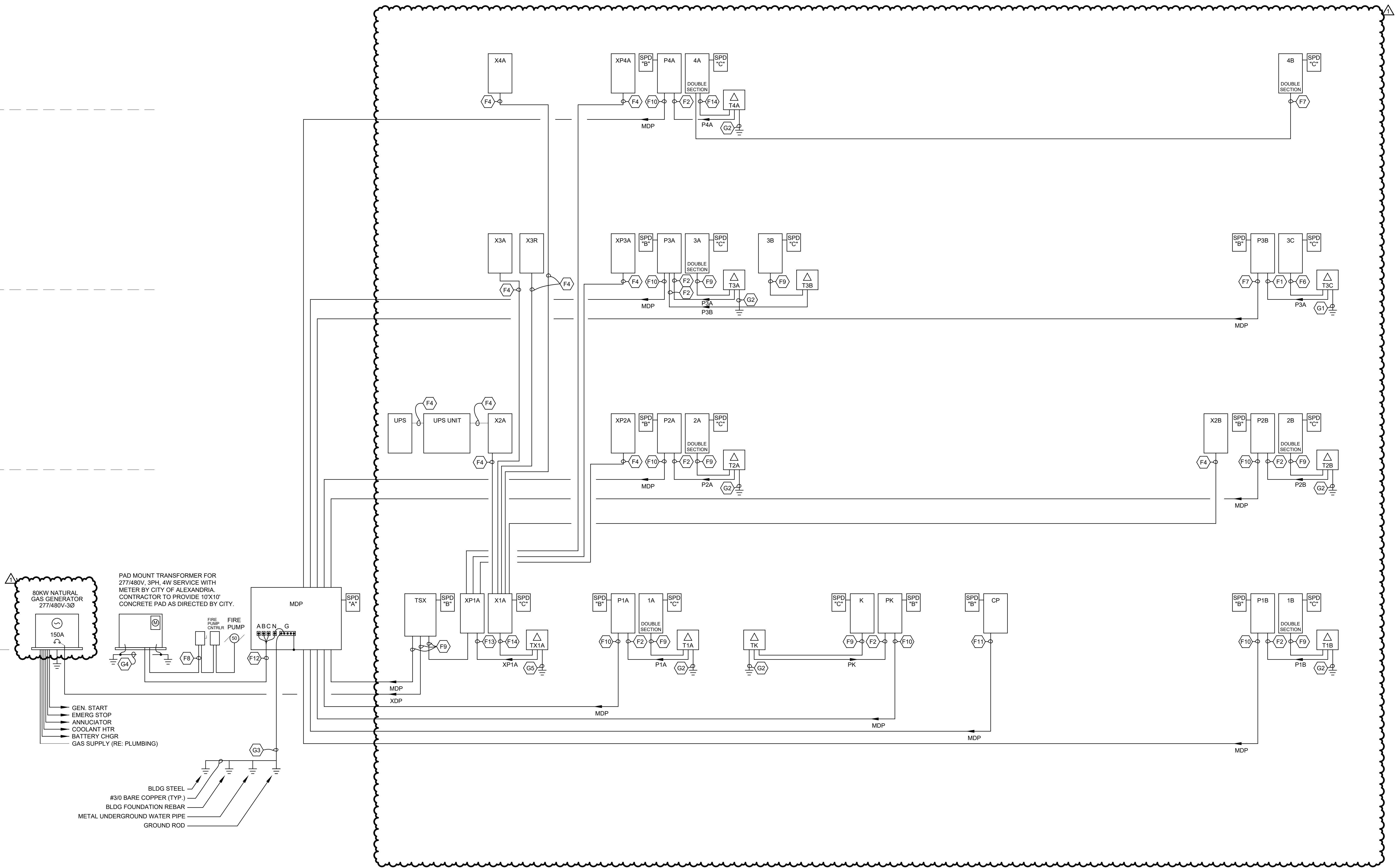
ROOF

FOUTH FLOOR

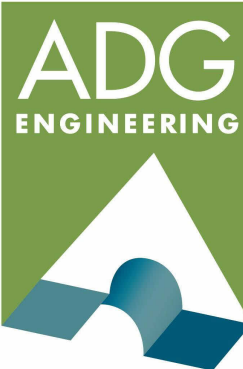
THIRD FLOOR

SECOND FLOOR

FIRST FLOOR



LEGEND



ASSOCIATED DESIGN GROUP, INC.
3909 West Congress Street, Suite 201
Lafayette, Louisiana 70506
Phone: (337) 234-5710
Email: adginc@adginc.org

Project No. 24174

KEYPLAN

